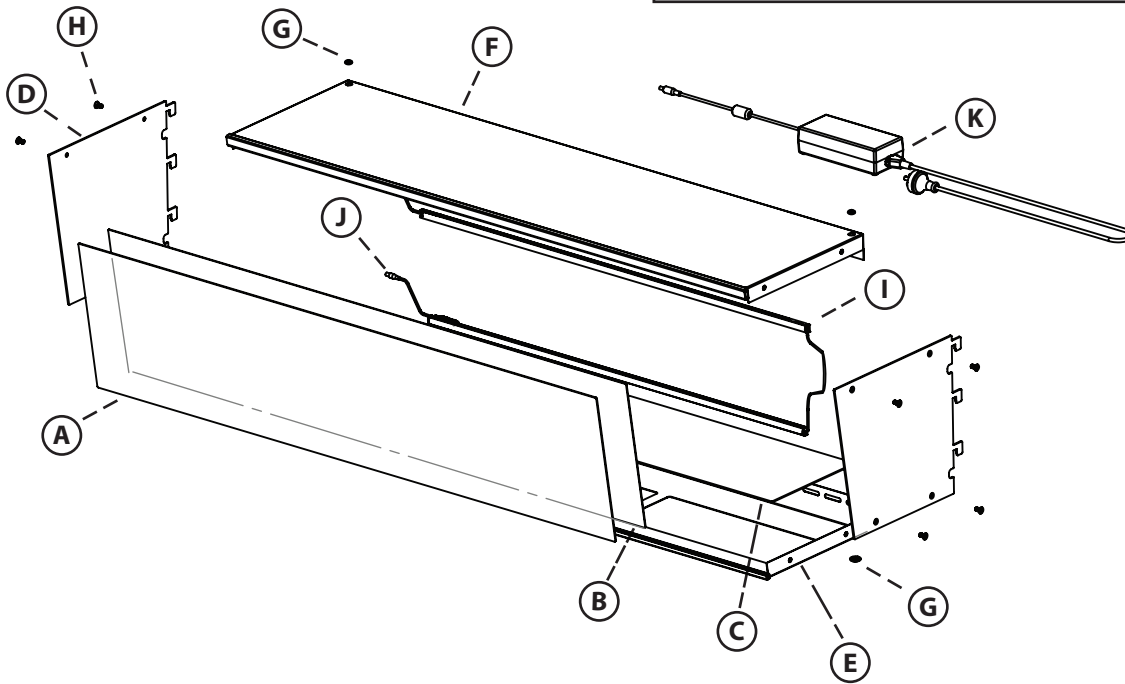


SIGNBOX ASSEMBLY INSTRUCTIONS

Single Configuration
600mm, 914mm & 1200mm

IMPORTANT - FOR YOUR SAFETY

- 2 people are required for the Signbox assembly to the gondola.
- Never use damaged parts



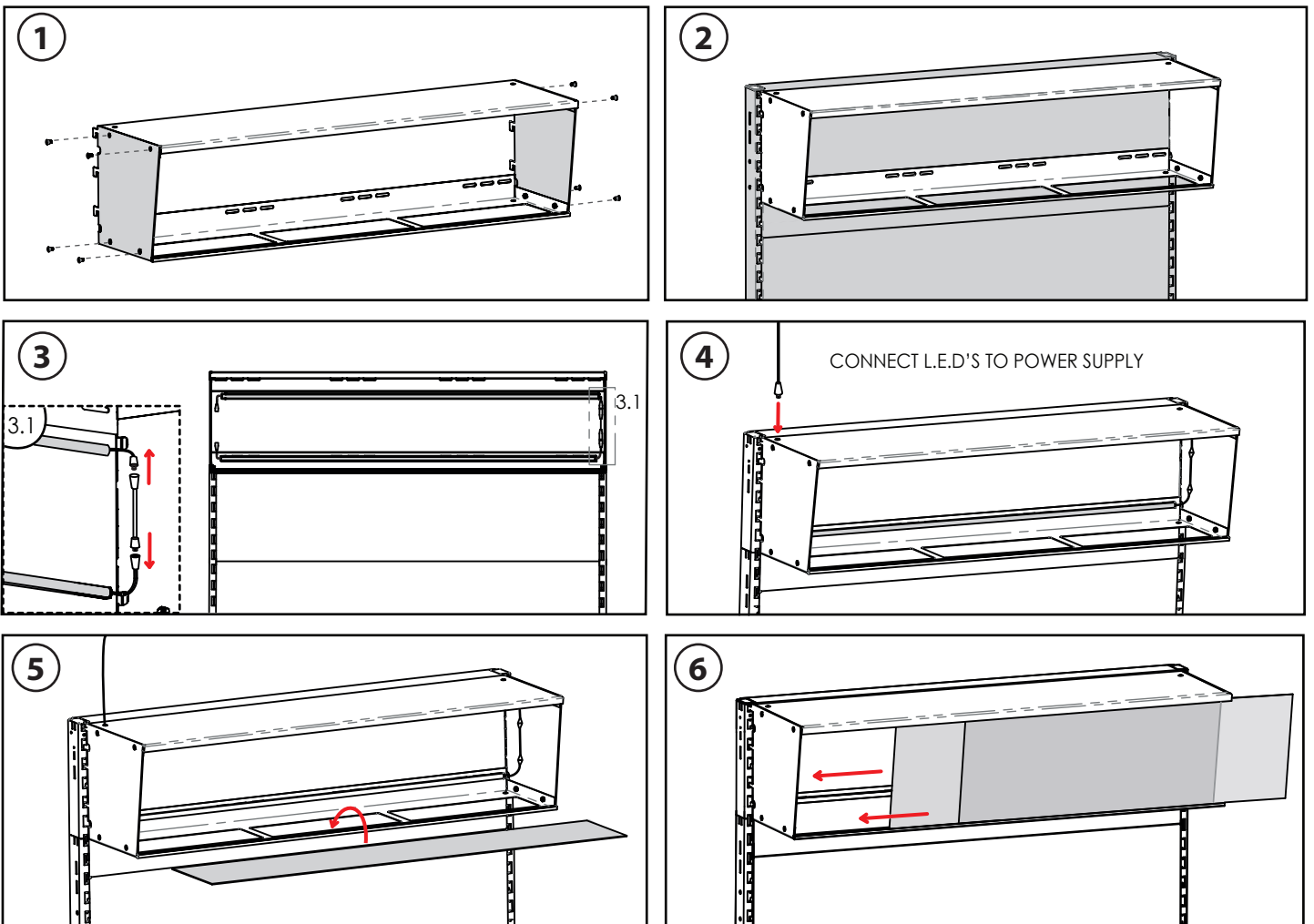
TOOLS REQUIRED:



PARTS LIST

LETTER	DESCRIPTION
A	CLEAR WINDOW
B	WINDOW DIFFUSER
C	BASE DIFFUSER
D	BRACKETS
E	BASE (SUB-ASSEMBLY)
F	LID (SUB-ASSEMBLY)
G	CABLE GROMMETS
H	M6x12 C/SUNK BOLT
I	L.E.D LIGHTBAR(S)
J	CONNECTOR(S)
K	POWER SUPPLY

PLEASE READ THE STEPS BELOW BEFORE COMMENCING ANY ASSEMBLY

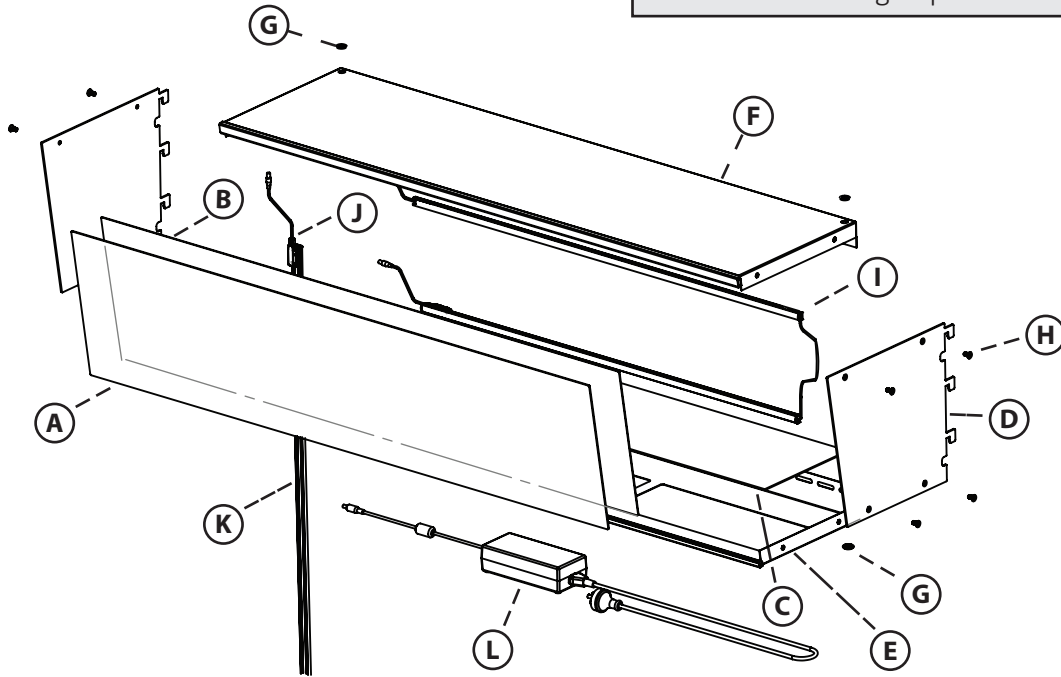


SIGNBOX ASSEMBLY INSTRUCTIONS

Power Track Configuration
600mm, 914mm & 1200mm

IMPORTANT - FOR YOUR SAFETY

- 2 people are required for the Signbox assembly to the gondola.
- Never use damaged parts



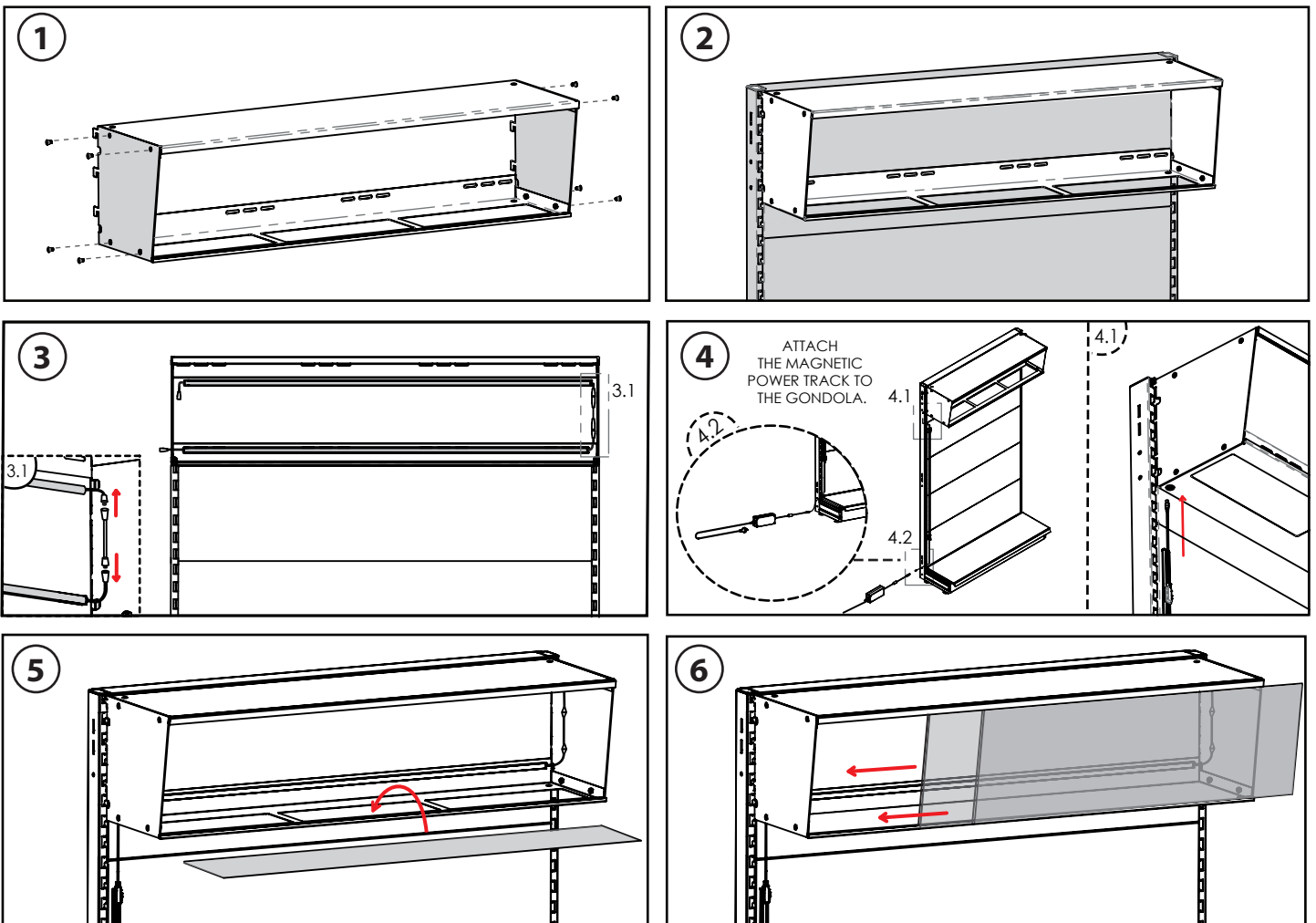
TOOLS REQUIRED:



PARTS LIST

LETTER	DESCRIPTION
A	CLEAR WINDOW
B	WINDOW DIFFUSER
C	BASE DIFFUSER
D	BRACKETS
E	BASE (SUB-ASSEMBLY)
F	LID (SUB-ASSEMBLY)
G	CABLE GROMMETS
H	M6x12 C/SUNK BOLT
I	L.E.D LIGHTBAR(S)
J	CONNECTOR(S)
K	POWER TRACK
L	POWER SUPPLY

PLEASE READ THE STEPS BELOW BEFORE COMMENCING ANY ASSEMBLY

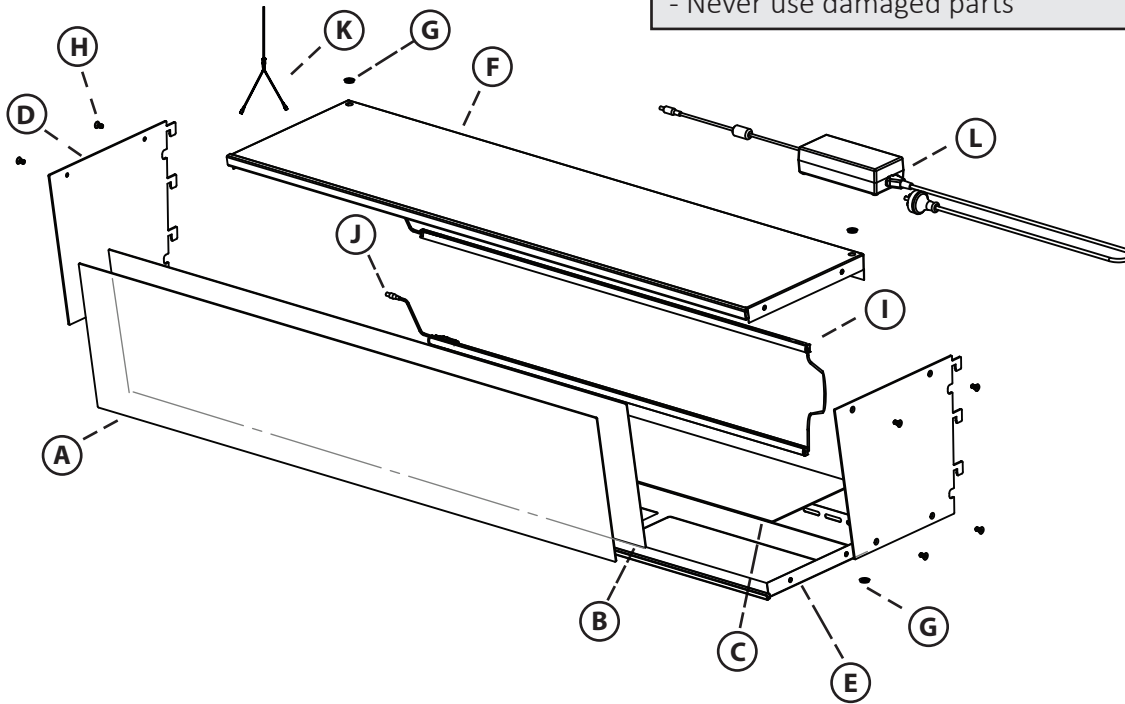


SIGNBOX ASSEMBLY INSTRUCTIONS

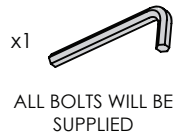
Series Configuration
600mm, 914mm & 1200mm

IMPORTANT - FOR YOUR SAFETY

- 2 people are required for the Signbox assembly to the gondola.
- Never use damaged parts



TOOLS REQUIRED:



PARTS LIST

LETTER	DESCRIPTION
A	CLEAR WINDOW
B	WINDOW DIFFUSER
C	BASE DIFFUSER
D	BRACKETS
E	BASE (SUB-ASSEMBLY)
F	LID (SUB-ASSEMBLY)
G	CABLE GROMMETS
H	M6x12 C/SUNK BOLT
I	L.E.D LIGHTBAR(S)
J	CONNECTOR(S)
K	SPLITTER CABLE
L	POWER SUPPLY

PLEASE READ THE STEPS BELOW BEFORE COMMENCING ANY ASSEMBLY

